

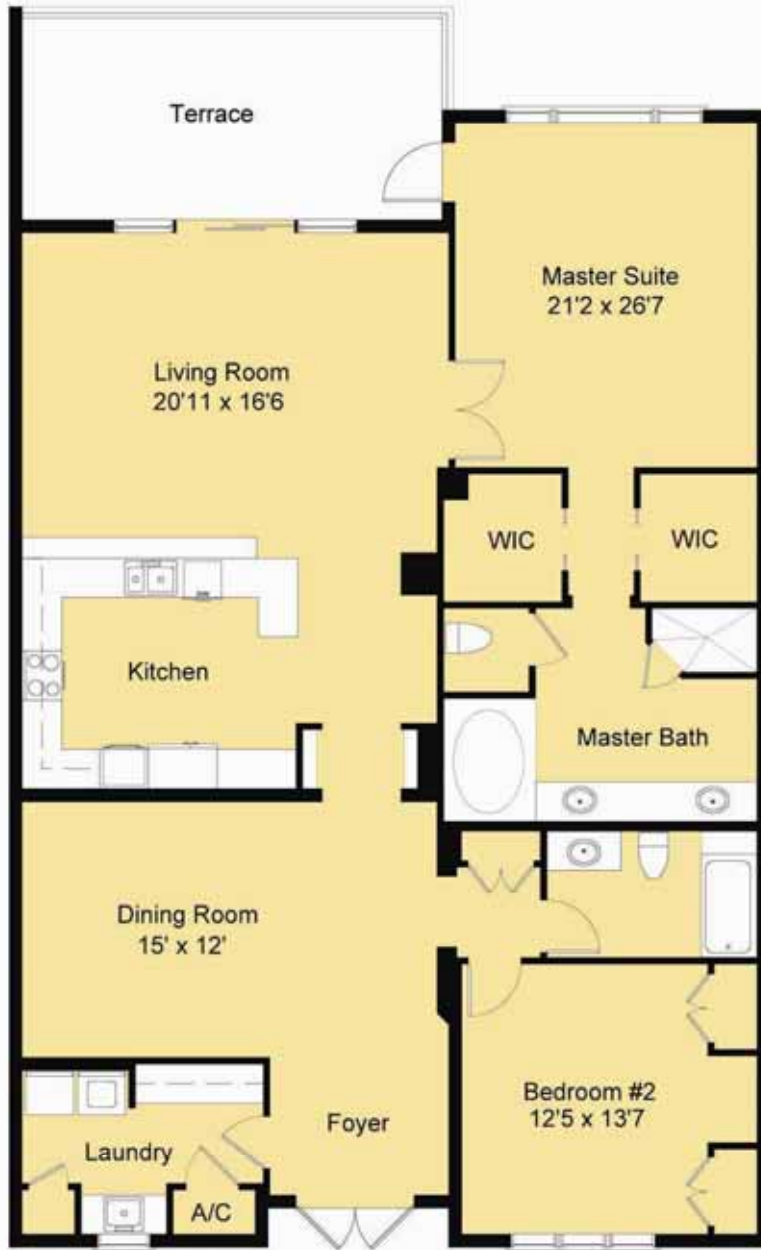


THE BAILEY

**Two bedrooms, two baths
2,077 square feet**

- Spacious formal dining room with the potential for a den conversion
- Elegant double door entry with foyer
- Volume ceilings with crown moldings
- Functional kitchen with custom cabinetry, upgraded stainless appliances and granite countertops
- Exquisite craftsmanship and design
- Elegant master suite with two walk-in closets and room for a sitting area
- Open terrace with peaceful views of the surrounding natural preserve
- 8' solid wood interior doors
- Generous laundry room with storage, ample counter space and wash tub
- Covered parking and elevator

THE BAILEY



This is an artist rendering and should not be relied upon for specific information. All dimensions and details are approximate.

Oral representations cannot be relied upon as correctly stating representations of the developer. For correct representations, make reference to this brochure and to the documents required by section 718.503, Florida Statutes, to be furnished a developer to a buyer or lessee.

